



- Shallow-Mount Hydraulic Barricade
- Ideal Solution for Entry-Points with Threat of Mobile Attack
- Hydraulic-Electrical Mechanism
- Manual Drive Fault Tolerance
- Fabricated from Heavy-Gauge Material
- PAS 68 & DOS SD-STD Certified
- Multiple Colors to Suit Different Entrances

EVT-SMHRB SERIES

SHALLOW-MOUNT HYDRAULIC
ROAD BLOCKER



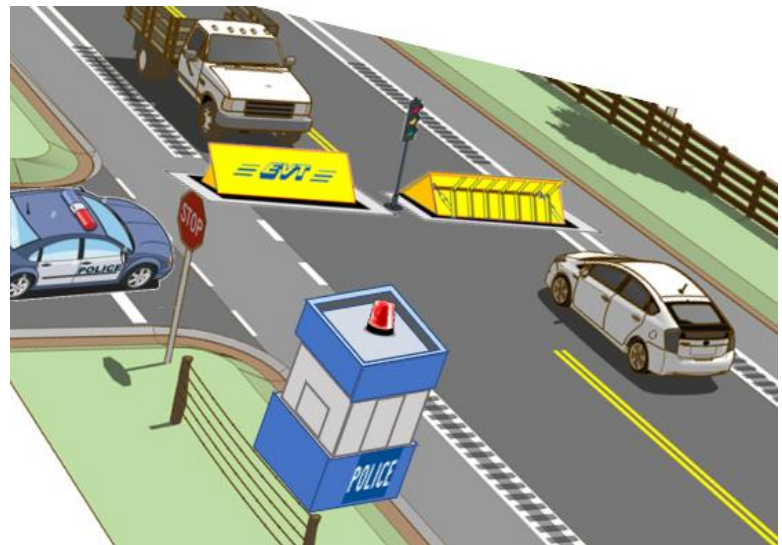
EVT-SMHRB-SERIES SHALLOW-MOUNT HYDRAULIC BARRICADE

Impact Load	7.5 Tons at 80km/h Speed
Blocking Width	2m, 3m, 4m, 5m, or 6m
Blocking Height	1.2m
Certification & Approvals	PAS68 V/7500[N3]/80/90:0.0, DOS SD-STD-02.01 Rev. A 04/2012 K12/L3, IWA 14-1 & ASTM F2656
Movement Duration	3-5 Seconds from Rise Movement to Home Position
No-Power Emergency	Manual Ride
Approvals	CE, FCC, RoHS

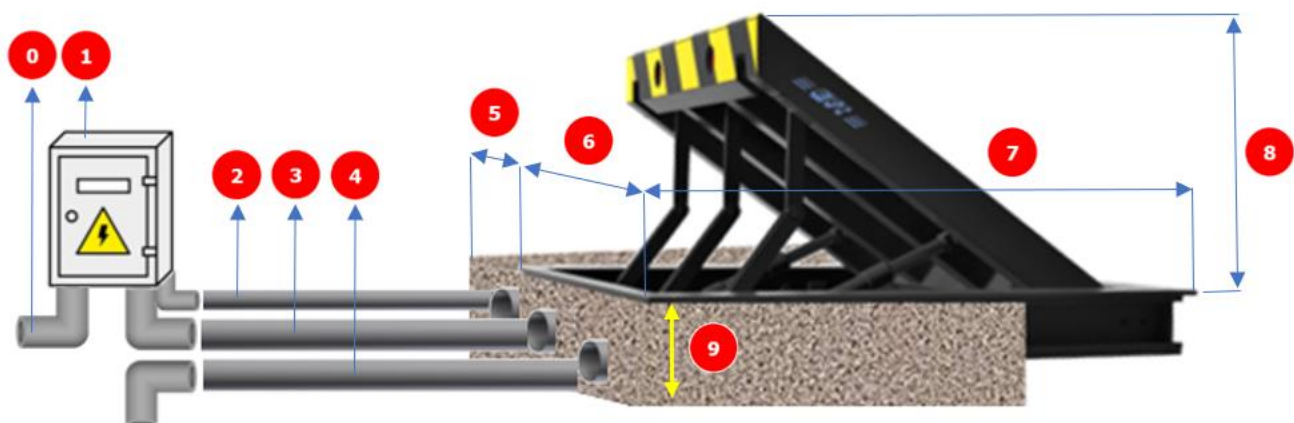
Dimensions	Width: 36cm + Blocking Width
	Length: 2.1m
Foundation Depth	40cm
Operating Temperature	-15°C ~ +65°C
Humidity	90% Non-Condensing DC12V±10%, 950mA
Power	Standard Three-Phase 380V, 50-60Hz
	OPTION: Single-Phase 220-240V EVT-SMHRBS Series (Includes Transformer)

FEATURES

- Physically impact tested to PAS 68, DOS SD-STD-02.01 Rev. A 04/2012 K12/L3, IWA 14-1 & ASTM F2656
- Shallow foundation 40cm overall depth
- Manual hand pump facility
- Manufactured from heavy gauge material
- Accurate performance guaranteed
- Reliability and low maintenance
- Operational under power failure conditions
- Zero penetration, Zero scatter
- Assurance of physical protection



INSTALLATION GUIDE



1	Hydraulic & power unit	4	Water drainage ducting (recommended 2.5")	7	2.1m Steel frame (blocker length)
2	Conduit for cables to Road Blocker	5	60cm concrete base (add to blocking width each side)	8	Blocking height
3	Hydraulic ducting (recommended 2.5")	6	Blocking width	9	Concrete base depth

COLOR OPTIONS



RAL1018 Zinc Yellow
EVT-SMHRB-18-x
(x refers to the desired blocking width)



RAL1028 Melon Yellow
EVT-SMHRB-28-x
(x refers to the desired blocking width)



RAL9005 Black Striped RAL1018
Zinc Yellow
EVT-SMHRB-58-x
(x refers to the desired blocking width)

All rights reserved. Appearance and specifications are subject to change without prior notice

